



Professional cranes & hoists for lifting



Electric Wire Rope Hoist / USA series



CHENG DAY MACHINERY WORKS CO., LTD.

No. 173, Wen Chiu Road, Dajia District, Taichung City, 437 Taiwan.
Tel: +886-4-2688-1581 Fax: +886-4-2688-1509
Website: www.chengday.com E-mail: info@chengday.com.tw

- Revision of July, 2018 (Edition No.4) #950169
- No further notice while sizes and dimensions update; Quotations are based on practical dimensions.
- Due to the printing factors, the color of the products is subject to minor deviation from the physical objects.



CHENG DAY MACHINERY WORKS CO., LTD.



Black Bear

Black Bear



• MCH-500/OM Horizontal Machining Center

1.INSPECTION and TESTIING EQUIPMENT :

- »Precise scanning measurements GT 800A 3D scanning probe.
- »Universal testing machine.
- »USK6 ultrasonic tester.
- »NV-30 vector scope tip dynamic balancing machine.
- »AVT-LE vibration meter.
- »Hardness tester model No.3R.
- »HT-2000 hardness tester.

2.FABRICATING EQUIPMENT :

- »Feer flow C/V system.
- »MCV-1350 Vertical machiningf center.
- »Gear shaping machine.
- »SK6 welding robot.
- »MCH-500 / OM Horizontal machining center.
- »CNC lathe machine.
- »KH-80 CNC horizontal machining center.
- »CM502 horizontal milling machining.

• TKS GT 800A-3-D Scanning Probe
For Highly Accurate Measurements



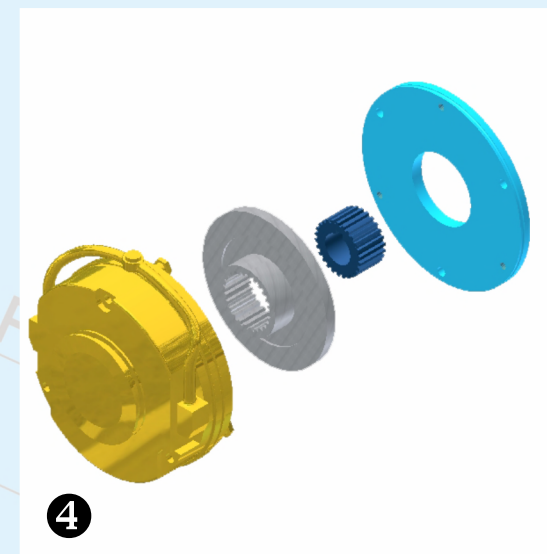
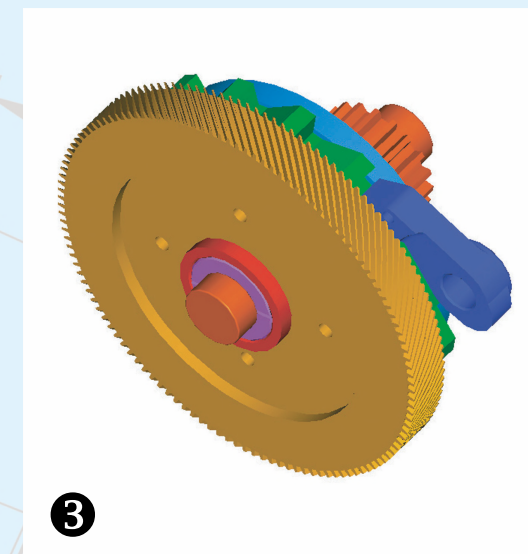
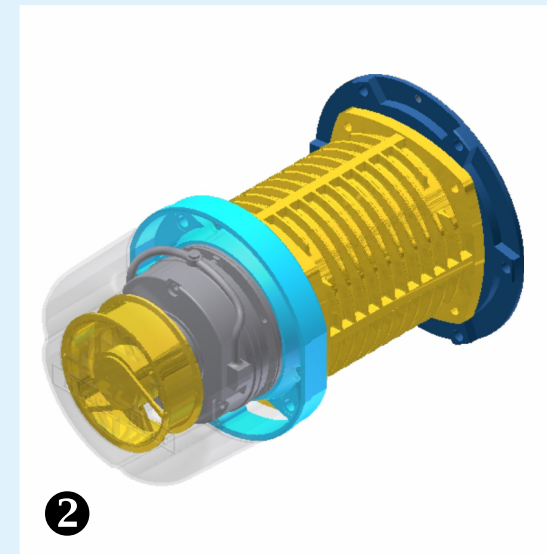
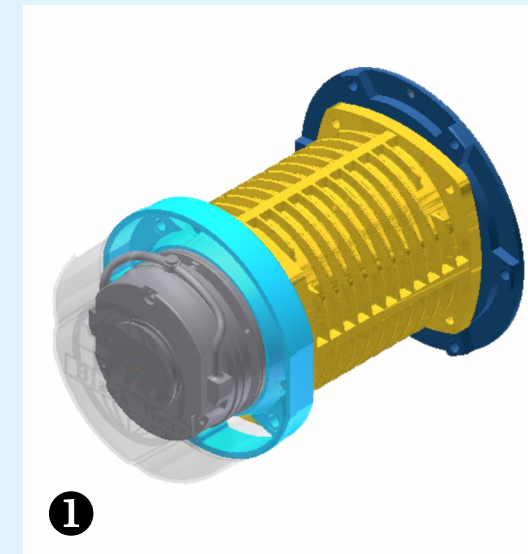
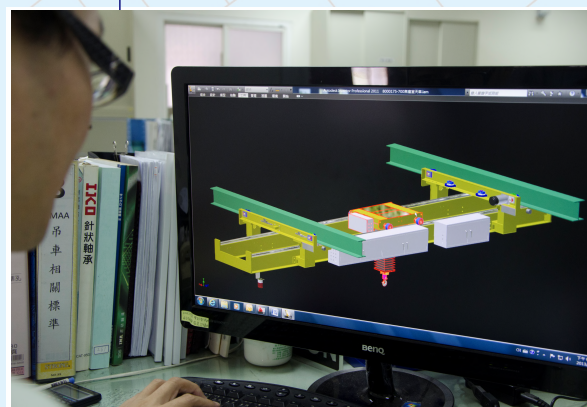
• Wire Rope Hoist Load Test Platform
• All Hoist Must Pass 125% Load Test
Prior To Shipment



• Welding Robot



• R & D Department



①DC BRAKE

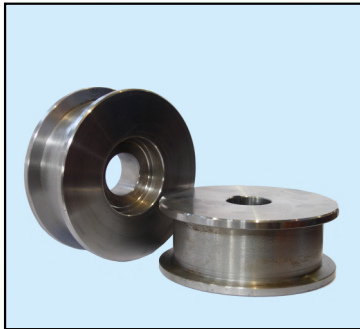
- » Wear resistant for long life.
- » Whisper quiet with instant action.
- » Integral design makes replacement a snap.

②HEAVY DUTY MOTOR

- »Available with fan cooled design for heavy duty applications.

③MECHANICAL LOAD BRAKE

④MOTOR BRAKE ASSEMBLY



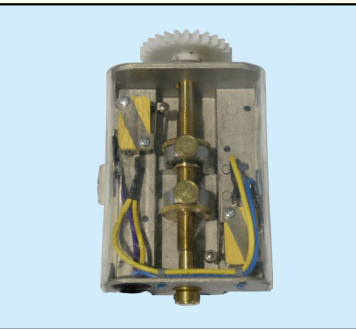
▲ TRAVERSE WHEEL

- The trolley wheels are made with hardened AISI 1045 carbon steel to BRH 380-420 equipped with life time lubricated bearings.
- All wheels equipped with double sealed, lifetime lubricated ball bearings with an L10 rating of 10,000 hours.



▲ CONTROL BOX

The control box is IP- 42.
(Stainless Steel material as option)
IP-56 available as an optional item.



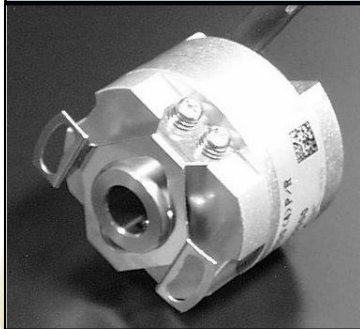
▲ OPTIONAL

Geared upper / lower (control circuit)
limit switch is available in a two
contact arrangement, NEMA 1
enclosure.



◀ TROLLEY WHEEL

The trolley wheels are made from AISI 1045 carbon steel, surface hardened to 380-420 brinell. Compound tread design allows usage on both ASI or wide flange beams. Equipped with life time lubricated bearings.



◀ OPTIONAL ENCODER

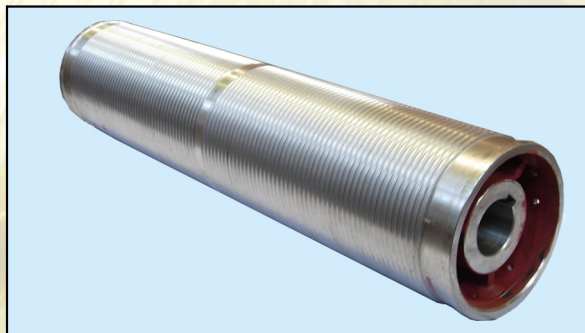
This double C-face encoder is mounted directly to the totally enclosed motor brake assembly. If desired, the encoder can also be mounted on the gear case cover.

► DC BRAKE

The DC brake operates quietly and provides long life under normal operation (in excess of 3 million actuations).
If desired, the earlier model AC brake is available for commonality of parts.

► DRUM

The drum is made of ASTM A283M carbon steel and machined in accordance with CMAA 70 - 4.6.



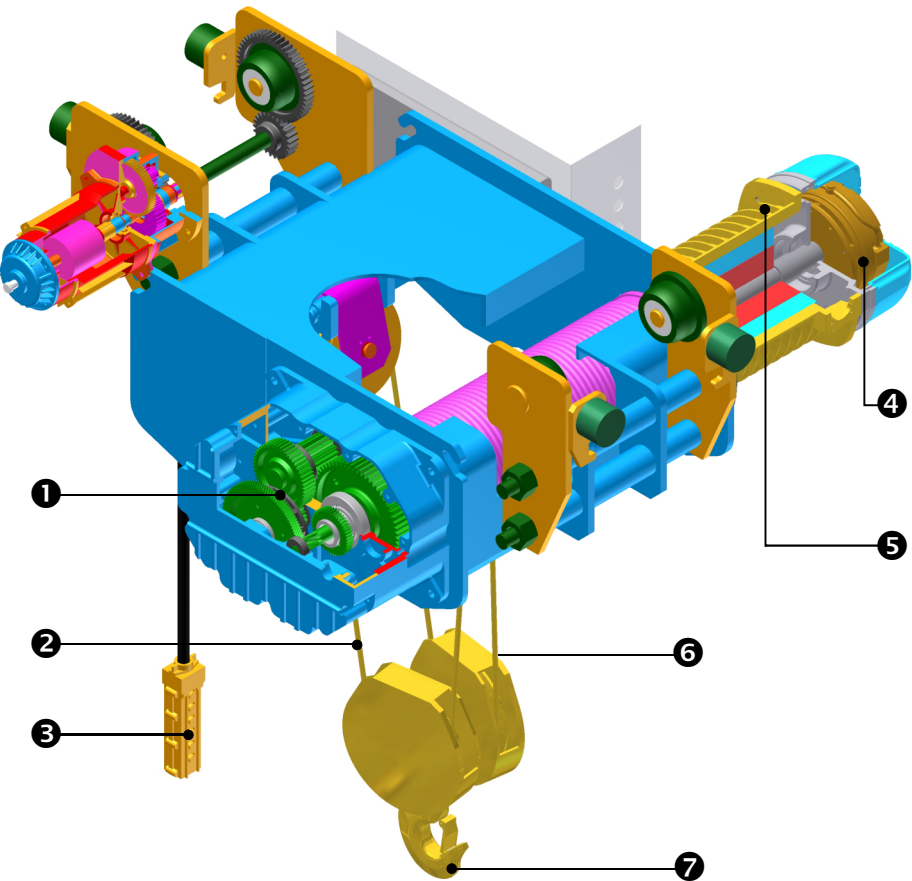
PRODUCT CODE

T	UD	H	D	500	DB
Model	Gear box	Reeving		S.W.L.	DC Brake
T : MONORAIL TROLLEY S : TOP RUNNING TROLLEY F : FOOTMOUNT	UA : 3HP X 1800RPM UB : 5HP X 1800RPM UC : 7HP X 1800RPM UD : 9HP X 1800RPM UEA : 11HP X 1800RPM UFA : 15HP X 1800RPM UG : 30/40HP X 1800RPM UI : 17.4HP X 1800RPM	H : 2PD I : 3PD J : 4PD K : 5PD R : 6PD	Blank : Single speed D : Only hoist dual speed D1 : Only trolley dual speed D2 : Both hoist & trolley dual speed	200 : 2ton=4400lbs 300 : 3ton=6600lbs 500 : 5ton=11000lbs 750 : 7.5ton=16500lbs 1000 : 10ton=22000lbs 1500 : 15ton=33000lbs 2000 : 20ton=44000lbs 2500 : 25ton=55000lbs 3000 : 30ton=66000lbs 4000 : 40ton=88000lbs 5000 : 50ton=110000lbs	Blank : AC brake

CLASSIFICATION OF LIFTING DEVICE

The Standard Black Bear hoist meets classification H4 heavy service duty cycle.
Black Bear offer hoists and accessories for overhead cranes covering all duty classifications.

Duty Cycle	Standby or Infrequent Service	Light Service	Moderate Service	Heavy Service	Severe Service	Continuous Severe Service
CMAA Crane Classification	A	B	C	D	E	F
HMI Hoist Classification	H1	H2	H3	H4	H5	-



1 MECHANICAL LOAD BRAKE

The advanced design of the mechanical load brake provides braking without hook drift, independent of the motor brake.

2 WIRE ROPE

Hight Strength 19x7 IWSC (195kg/mm²)
Wire Rope has swaged fittings on both ends.

3 PUSH BUTTON STATION

(USA) IP-65 Push Button Station is standard and it's light weight and durable.

4 MOTOR BRAKE

Our DC Brake provides instant braking, with smooth, controlled starting and stopping.

5 MOTOR

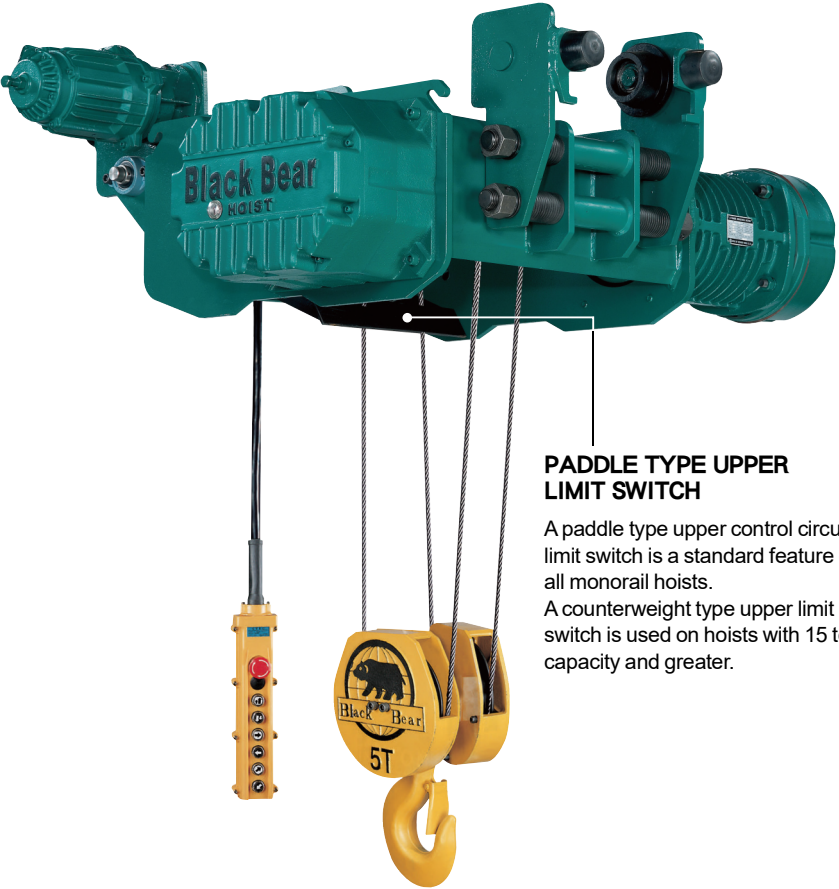
Hoist duty motors are made of heavy cast iron that provide maximum cooling during even the toughest operating conditions. The class F motor insulation (single speed) are rated for H4 service. Other insulation classes and thermal rating are available upon request.

6 LIFT

True vertical lift standard on low headroom hoists.

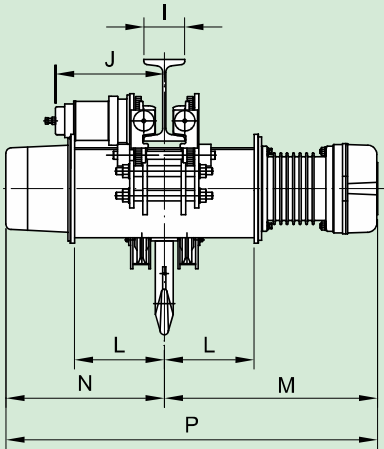
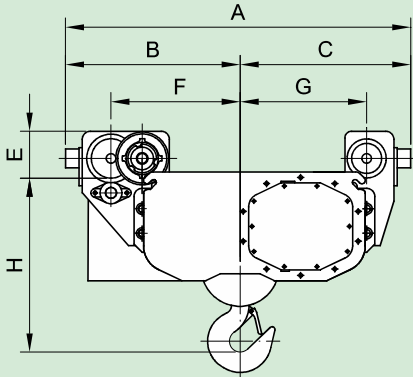
7 HOOK

Our high strength forged steel hook comes equipped with a safety latch and a thrust bearing which enables the hook to swivel 360 degrees.



PADDLE TYPE UPPER LIMIT SWITCH

A paddle type upper control circuit limit switch is a standard feature on all monorail hoists.
A counterweight type upper limit switch is used on hoists with 15 ton capacity and greater.



TU SERIES SPECIFICATIONS & DIMENSIONS

Model	Capacity	Lift (ft)	Hoisting			Traversing			Wire Rope ømm	Reeving Type	Approximate Dimension(in)																Trolley Wheels Adjustment (in)	Appro. Weight (lbs)	
			Speed (ft/min) 60HZ	Motor HP	Motor RPM	Speed (ft/min) 60HZ	Motor HP	Motor RPM			A	B	C	E	F	G	H	I	J	L	M		N	P					
																					(S)	(D)		(S)	(D)				
TUAH-100DB	1 ton	20	33.6	3	1800	49.2	0.33	1800	ø6	2PD	51.5	27.2	24.3	5.3	19.9	17.9	19.8	4	13.6	10.7	24.7	27.9	17.4	42.1	45.3	4~11 1/4	966		
TUAHD-100DB	2200 lbs	30	33.6/11.2	3/1	1800/600	49.2/16.4	0.33/0.11	1800/600												13.9	27.8	31.0	20.6	48.4	51.6		1098		
	40	17.0																		31.0	34.2	23.7	54.7	57.9	1230				
TUBH-200DB	2 ton	20	28.6	5	1800	49.2	0.54	1800	ø8	2PD	51.5	27.2	24.3	5.3	20.3	17.9	23.1	4	17.4	12.7	28.2	29.8	19.4	47.6	49.2	4~11 1/4	1050		
TUBHD-200DB	4400 lbs	30	28.6/9.5	5/1.7	1800/600	49.2/16.4	0.54/0.17	1800/600												16.8	32.4	34.0	23.5	55.9	57.5		1118		
	40	21.0																		36.5	38.1	27.7	64.2	65.8	1250				
TUCH-300DB	3 ton	20	22.1	7	1800	49.2	0.54	1800	ø10	2PD	55.8	28.0	27.8	7.0	20.5	20.6	27.4	5	21.7	13.0	30.5	33.8	23.6	54.1	57.4	5~13	1480		
TUCHD-300DB	6600 lbs	30	22.1/7.3	7/2.3	1800/600	49.2/16.4	0.54/0.17	1800/600												17.0	34.5	37.8	27.5	62.0	65.3		1523		
	40	19.9																		37.5	40.8	30.5	68.0	71.3	1613				
TUDH-500DB	5 ton	20	19.1	9	1800	49.2	1	1800	ø10	2PD	55.8	28.0	27.8	7.0	20.5	20.6	28.1	5	21.7	13.0	30.3	33.8	23.6	53.9	57.4	5~13	1533		
TUDHD-500DB	11000 lbs	30	19.1/6.3	9/3	1800/600	49.2/16.4	1/0.33	1800/600												17.0	34.2	37.8	27.5	61.7	65.3		1650		
	40	19.9																		37.2	40.8	30.5	67.7	71.3	1713				
TUEAH-750DB	7.5 ton	20	15.9	11	1800	56.6	1.5	1800	ø12	2PD	69.7	35.4	34.3	11	28	26.6	38.6	6	28.3	14.1	35.0	35.1	27.8	62.8	62.9	6~14	3020	3262	
TUEAHD-750DB	16500 lbs	30	15.9/5.3	11/3.7	1800/600	56.6/18.9	1.5/0.54	1800/600												18.0	38.9	39.0	31.8	70.7	70.8		3170	3412	
	40	21.9																		42.9	43.0	35.7	78.6	78.7	3320		3562		
TUFAH-1000DB	10 ton	20	16.1	15	1800	49.2	2	1800	ø14	2PD	71.9	36.6	35.3	11	28.1	27.0	42.7	6	28.3	14.1	35.0	37.5	27.8	62.8	65.3	6~14	3080	3300	
TUFAHD-1000DB	22000 lbs	30	16.1/5.3	15/5	1800/600	49.2/16.4	2/0.67	1800/600												18.0	38.9	41.4	31.8	70.7	73.2		3300	3520	
	40	21.9																		42.9	45.4	35.7	78.6	81.1	3570		3790		
TUIH-1500DB	15 ton	20	14	17.4	1800	52.5	2	1800	ø18	2PD	81.9	42.5	39.3	11.3	30.5	31.0	57.2	6	28.3	17.8	39.0	41.3	31.7	70.7	73.0	6~14	4570	4690	
TUIHD-1500DB	33000 lbs	30	14/4.6	17.4/5.8	1800/600	52.5/17.4	2/0.67	1800/600												21.8	43.0	45.3	35.6	78.6	80.9		4620	4730	
	40	26.1																		47.3	49.6	39.9	87.2	89.5	4790		4910		
TUII-2000DB	20 ton	20	10.4	17.4	1800	59	3	1800	ø18	3PD	90.2	44.0	45.4	13.6	34.4	36.5	69.9	6	30.8	21.0	42.2	44.5	34.9	77.1	79.4	6~14	6020	6140	
TUIID-2000DB	44000 lbs	30	10.4/3.46	17.4/5.8	1800/600	59/19.7	3/1	1800/600												26.8	48.0	50.3	40.6	88.6	90.9		6390	6510	
	40	32.7																		53.9	56.2	46.5	100.4	102.7	6760		6880		

* Dimensions included control panel

* Trolley bearing with lubrication system is an available optional, please contact with Black Bear Corporation for a price.

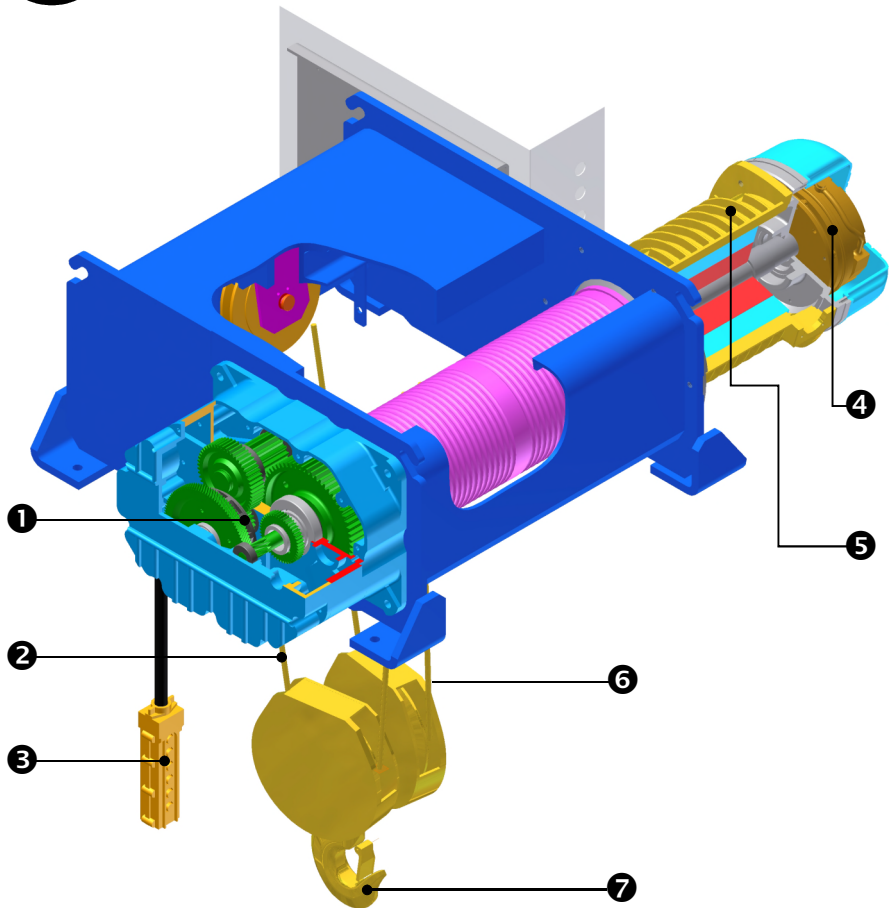
* Radial curved trolley is an available optional, please contact with Black Bear Corporation for a price.



ELECTRIC WIRE ROPE HOIST

FOOTMOUNT

Black Bear



1 MECHANICAL LOAD BRAKE

The advanced design of the mechanical load brake provides braking without hook drift, independent of the motor brake.

2 WIRE ROPE

High Strength 19x7 IWSC (195kg/mm²)
Wire Rope has swaged fittings on both ends.

3 PUSH BUTTON STATION

(USA) IP-65 Push Button Station is standard and it's light weight and durable.

4 MOTOR BRAKE

Our DC Brake provides instant braking, with smooth, controlled starting and stopping.

5 MOTOR

Hoist duty motors are made of heavy cast iron that provide maximum cooling during even the toughest operating conditions. The class F motor insulation (single speed) are rated for H4 service. Other insulation classes and thermal rating are available upon request.

6 LIFT

True vertical lift standard on low headroom hoists.

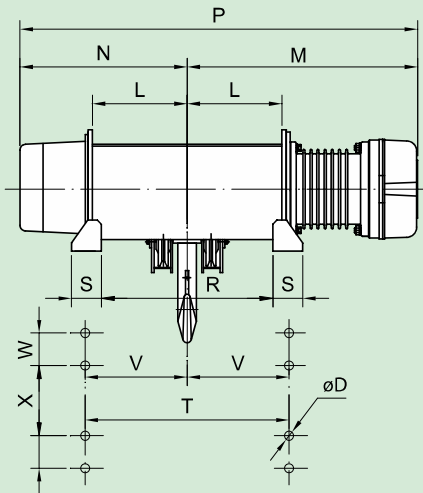
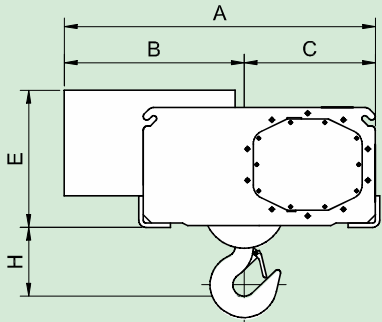
7 HOOK

Our high strength forged steel hook comes equipped with a safety latch and a thrust bearing which enables the hook to swivel 360 degrees.



PADDLE TYPE UPPER LIMIT SWITCH

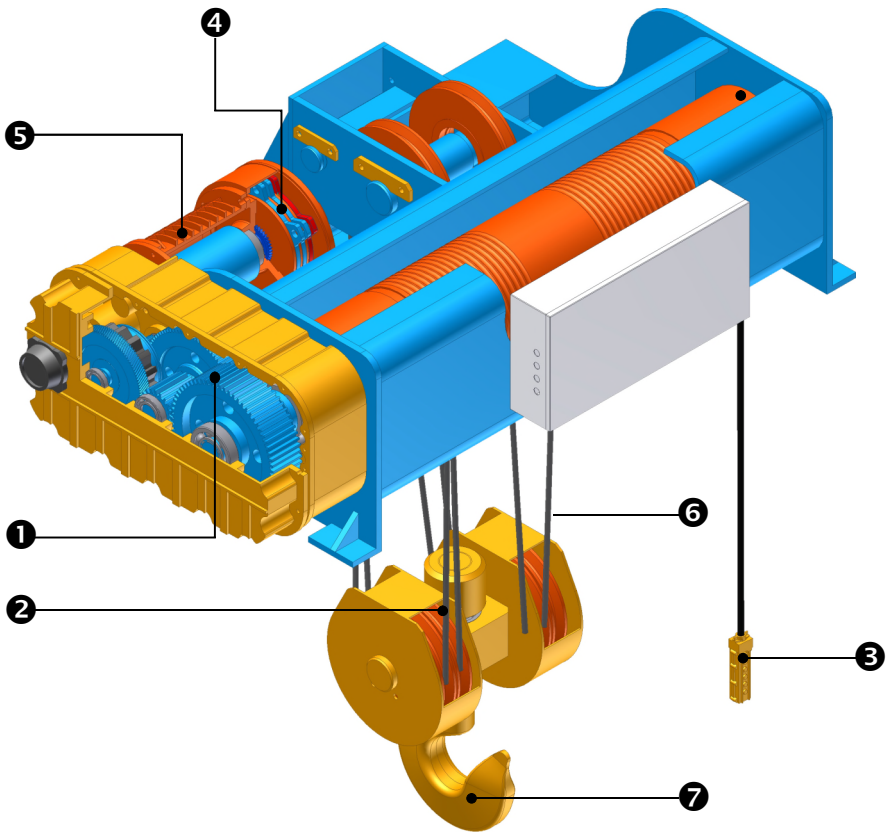
A paddle type upper control circuit limit switch is a standard feature on all footmount hoists.
A counterweight type upper limit switch is used on hoists with 15 ton capacity and greater.



FU SERIES SPECIFICATIONS & DIMENSIONS

Model	Capacity	Lift (ft)	Hoisting			Wire Rope	Reeving Type	Approximate Dimension(in)																	Appro. Weight (lbs)			
			Speed (ft/min)	Motor HP	Motor RPM			ømm	A	B	C	E	H	L	M		N	P		R	S	T	V	W	X	øD	(S)	(D)
			60HZ			(S)	(D)								(S)	(D)												
FUAH-100DB	1 ton	20	33.6	3	1800	ø6	2PD	40.1	23.5	16.6	17.2	6.3	10.7	24.7	27.9	17.4	42.1	45.3	20.3	3.0	24.6	12.30	-	26	0.55	820	958	
FUAHD-100DB	2200 lbs	30	33.6/11.2	3/1	1800/600								13.9	27.8	31.0	20.6	48.4	51.6	26.6		30.9	15.45				37.2	18.60	1090
		40											17.0	31.0	34.2	23.7	54.7	57.9	32.9		37.2	18.60				1090		
FUBH-200DB	2 ton	20	28.6	5	1800	ø8	2PD	40.1	23.5	16.6	17.2	9.1	12.7	28.2	29.8	19.4	47.6	49.2	24.2	3.0	28.5	14.25	-	26	0.55	870	1008	
FUBHD-200DB	4400 lbs	30	28.6/9.5	5/1.7	1800/600								16.8	32.4	34.0	23.5	55.9	57.5	32.5		36.8	18.40				1008		
		40											21.0	36.5	38.1	27.7	64.2	65.8	40.8		45.1	22.55				1140		
FUCH-300DB	3 ton	20	22.1	7	1800	ø10	2PD	43.5	23.5	20.0	19.5	11.6	13.0	30.5	33.8	23.6	54.1	57.4	24.1	4.4	30.5	15.25	-	28	0.71	1149	1259	
FUCHD-300DB	6600 lbs	30	22.1/7.3	7/2.3	1800/600								17.0	34.5	37.8	27.5	62.0	65.3	31.9		38.4	19.20				1259		
		40											19.9	37.5	40.8	30.5	68.0	71.3	37.9		44.4	22.20				1369		
FUDH-500DB	5 ton	20	19.1	9	1800	ø10	2PD	46.5	26.5	20.0	19.5	12.4	13.0	30.3	33.8	23.6	53.9	57.4	24.1	4.4	30.5	15.25	-	28	0.71	1193	1303	
FUDHD-500DB	11000 lbs	30	19.1/6.3	9/3	1800/600								17.0	34.2	37.8	27.5	61.7	65.3	31.9		38.4	19.20				1303		
		40											19.9	37.2	40.8	30.5	67.7	71.3	37.9		44.4	22.20				1450		
FUEAH-750DB	7.5 ton	20	15.9	11	1800	ø12	2PD	53.0	28.6	24.4	25.3	12.9	14.1	35.0	35.1	27.8	62.8	62.9	26.1	4.9	33.3	16.65	3.15	33.9	0.71	2227	2405	
FUEAHD-750DB	16500 lbs	30	15.9/5.3	11/3.7	1800/600								18.0	38.9	39.0	31.8	70.7	70.8	34.0		41.1	20.55				2502	2680	
		40											21.9	42.9	43.0	35.7	78.6	78.7	41.9		49.0	24.50				2780	2960	
FUFAH-1000DB	10 ton	20	16.1	15	1800	ø14	2PD	53.0	28.2	24.8	25.3	16.5	14.1	35.0	37.5	27.8	62.8	65.3	26.1	4.9	33.3	16.65	3.15	33.9	0.71	2420	2597	
FUFAHD-1000DB	22000 lbs	30	16.1/5.3	15/5	1800/600								18.0	38.9	41.4	31.8	70.7	73.2	34.0		41.1	20.55				2795	2971	
		40											21.9	42.9	45.4	35.7	78.6	81.1	41.9		49.0	24.50				3197	3383	
FUIH-1500DB	15 ton	20	14	17.4	1800	ø18	2PD	66.7	37.8	28.8	26.9	31.6	17.8	39.0	41.3	31.7	70.7	73.0	33.9	4.9	41.06	20.53	3.15	40.0	0.71	3520	3630	
FUIHD-1500DB	33000 lbs	30	14/4.6	17.4/5.8	1800/600								21.8	43.0	45.3	35.6	78.6	80.9	41.8		48.94	24.47				3560	3680	
		40											26.1	47.3	49.6	39.9	87.2	89.5	50.5		57.60	28.80				3735	3850	
FUII-2000DB	20 ton	20	10.4	17.4	1800	ø18	3PD	65.0	33.5	31.5	26.9	42.0	21.0	42.2	44.5	34.9	77.1	79.4	40.4	4.9	47.48	23.74	3.15	38.58	0.71	4590	4710	
FUIID-2000DB	44000 lbs	30	10.4/3.46	17.4/5.8	1800/600								26.8	48.0	50.3	40.6	88.6	90.9	51.8		58.90	29.45				4890	5010	
		40											32.7	53.9	56.2	46.5	100.4	102.7	63.6		70.70	35.35				5200	5320	
FUIJ-2500DB	25 ton	20	7	15	1800	ø18	4PD	47.2	14.3	33	26.9	45.3	29.4	53.3	55.7	43.1	96.4	98.8	57.0	4.9	64.20	32.10	3.15	38.58	0.71	5045	5165	
FUIJD-2500DB	55000 lbs	30	7/2.3	15/5.8	1800/600								37.9	61.8	64.1	51.6	113.3	115.7	74.0		81.10	40.60				5510	5630	
		40											46.4	70.3	72.6	60.1	130.3	132.7	91.0		98.10	49.10				5978	6095	
FUIJ-3000DB	30 ton	20	7	17.4	1800	ø18	4PD	60.8	32.2	28.6	27.7	61.3	29.6	50.8	53.1	43.4	94.2	96.5	57.6	4.9	64.80	32.40	3.20	50.60	0.71	5345	5465	
FUIJD-3000DB	66000 lbs	30	7/2.3	17.4/5.8	1800/600								38.4	59.6	59.6	52.3	111.9	114.2	75.4		82.50	41.30				5810	5930	
		40											47.3	68.5	70.9	61.1	129.6	132.0	93.0		100.2	50.10				6278	6395	

※ Dimensions included control panel



1 MECHANICAL LOAD BRAKE

The advanced design of the mechanical load brake provides braking without hook drift, independent of the motor brake.

2 WIRE ROPE

Hight Strength 19x7 IWSC (195kg/mm²)
Wire Rope has swaged fittings on both ends.

3 PUSH BUTTON STATION

(USA) IP-65 Push Button Station is standard and it's light weight and durable.

4 MOTOR BRAKE

Our AC Brake provides instant braking, with smooth, controlled starting and stopping.

5 MOTOR

Hoist duty motors are made of heavy cast iron that provide maximum cooling during even the toughest operating conditions. The class F motor insulation (single speed) are rated for H4 service. Other insulation classes and thermal rating are available upon request.

6 LIFT

True vertical lift standard on low headroom hoists.

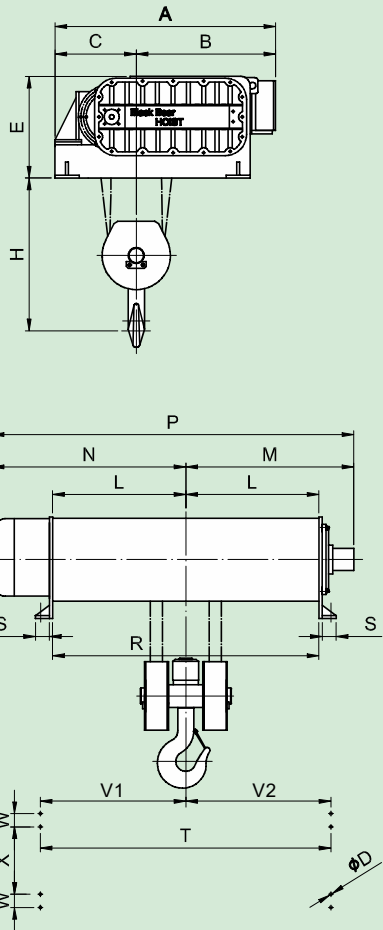
7 HOOK

Our high strength forged steel hook comes equipped with a safety latch and a thrust bearing which enables the hook to swivel 360 degrees.



COUNTERWEIGHT TYPE UPPER LIMIT SWITCH

A counterweight type upper control circuit limit switch is a standard feature on all footmount hoists.



FU SERIES SPECIFICATIONS & DIMENSIONS

Model	Capacity	Lift (ft)	Hoisting			Wire Rope	Reeving Type	Approximate Dimension(in)																	Appro. Weight (lbs)	
			Speed (ft/min)	Motor HP	Motor RPM																				(S)	(D)
			60HZ			A		B	C	E	H	L	M	N	P	R	S	T	V1	V2	W	X	øD			
FUGI-2500	25 ton 55000 lbs	20	13.2	30	1800	ø18	3PD	67.5	38.3	29.2	30.1	47.2	41.0	51.8	59.9	111.7	82.0	4.1	88.9	44.6	44.3	3.9	48.8	0.86	10027	
FUGID-2500		30	13.2/4.4	30/10	1800/600								41.0	51.8	59.9	111.7	82.0		88.9	44.6	44.3				10027	
		40											46.9	57.7	65.8	123.5	93.8		100.7	50.5	50.2				11417	
FUGI-3000	30 ton 66000 lbs	20	13.2	40	1800	ø20	3PD	67.5	33.3	34.2	30.1	50.6	40.4	51.3	59.3	110.6	80.8	4.1	87.8	46.9	40.9	3.9	48.8	0.86	10248	
		30	13.2/4.4	40/13.4	1800/600								40.4	51.3	59.3	110.6	80.8		87.8	46.9	40.9				10248	
FUGID-3000		40											40.3	55.2	63.3	118.5	80.6		99.6	52.8	46.9				11318	
FUGJ-4000	40 ton 88000 lbs	30	9.9	40	1800	ø20	4PD	67.5	38.3	29.2	30.1	59.0	40.4	51.3	59.3	110.6	80.8	4.1	87.8	46.9	40.9	3.9	48.8	0.86	10698	
		40	9.9/3.3	40/13.4	1800/600								50.2	61.1	69.2	130.3	100.4		107.5	56.7	50.8				11763	
FUGJD-4000		50											58.1	69.0	77.1	146.6	116.2		123.3	64.6	58.7				12633	

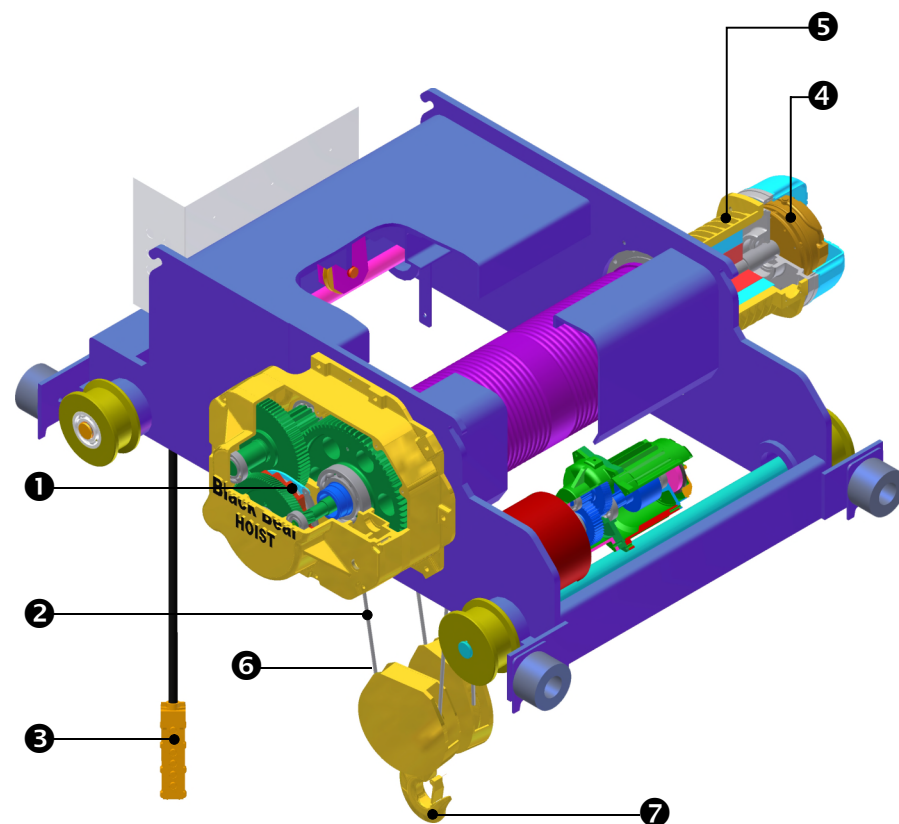
※Dimensions included control panet



ELECTRIC WIRE ROPE HOIST

TOP RUNNING TROLLEY HOIST

Black Bear



1 MECHANICAL LOAD BRAKE

The advanced design of the mechanical load brake provides braking without hook drift, independent of the motor brake.

2 WIRE ROPE

High Strength 19x7 IWSC (195kg/mm²)
Wire Rope has swaged fittings on both ends.

3 PUSH BUTTON STATION

(USA) IP-65 Push Button Station is standard and it's light weight and durable.

4 MOTOR BRAKE

Our DC Brake provides instant braking, with smooth, controlled starting and stopping.

5 MOTOR

Hoist duty motors are made of heavy cast iron that provide maximum cooling during even the toughest operating conditions. The class F motor insulation (single speed) are rated for H4 service. Other insulation classes and thermal rating are available upon request.

6 LIFT

True vertical lift standard on low headroom hoists.

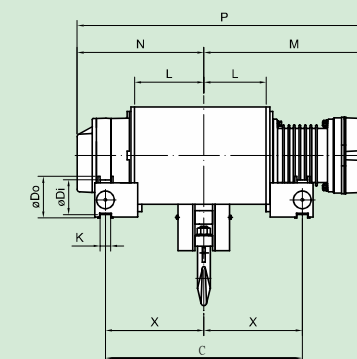
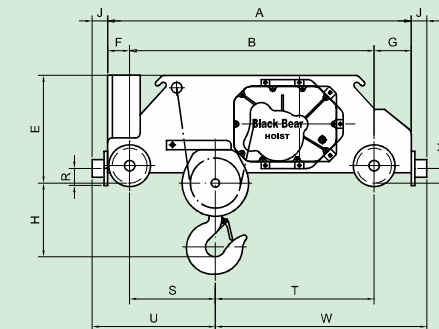
7 HOOK

Our high strength forged steel hook comes equipped with a safety latch and a thrust bearing which enables the hook to swivel 360 degrees.



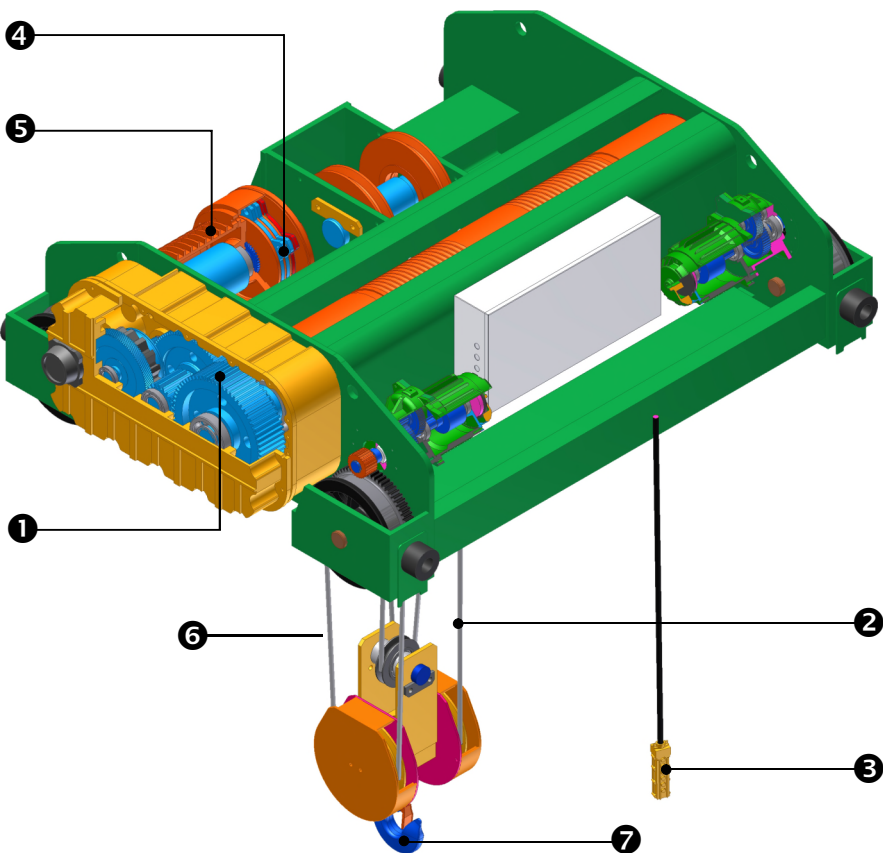
PADDLE TYPE UPPER LIMIT SWITCH

A paddle type upper control circuit limit switch is a standard feature on all top running trolley hoists.
A counterweight type upper limit switch is used on hoists with 15 ton capacity and greater.



SU SERIES SPECIFICATIONS & DIMENSIONS

Model	Capacity	Lift (ft)	Hoisting			Traversing			Wire Rope	Reeving Type	Approximate Dimension(in)																								Appro. Weight (lbs)											
			Speed (ft/min) 60HZ	Motor HP	Motor RPM	Speed (ft/min) 60HZ	Motor HP	Motor RPM			A	B	C	øDi	øDo	E	F	G	H	J	K	L	M		N	P		R	S	T	U	V	W	X												
																							(S)	(D)		(S)	(D)																			
SUBH-200DB	2ton	20	28.6	5	1800	66	0.54	1800	ø8	2PD	43.2	33.4	33.5	4.7	5.8	21.3	5.1	4.7	9.1	2.5	1.6	12.7	28.2	29.8	19.4	47.6	49.2	2.0	13.7	19.7	20.9	2.35	27.3	16.75	1026											
SUBHD-200DB	4400lbs	30																																		28.6/9.5	5/1.7	1800/600	66/22	0.54/0.17	1800/600	39.4	16.8	32.4	34.0	23.5
		40	47.2	21.0	36.5	38.1	27.7	64.2																																		65.8	23.60	1290		
SUCH-300DB	3ton	20	22.1	7	1800	69	0.54	1800	ø10	2PD	48.6	37.8	33.5	5.9	7.0	22.6	4.5	6.3	10.5	2.6	1.8	13.0	30.5	33.8	23.6	54.1	57.4	3.0	15.4	22.4	22.6	2.95	31.2	16.75	1471											
SUCHD-300DB	6600lbs	30																																		22.1/7.3	7/2.3	1800/600	69/23	0.54/0.17	1800/600	45.3	17.0	34.5	37.8	27.5
		40	45.3	19.9	37.5	40.8	30.5	68.0																																		71.3	22.65	1653		
SUDH-500DB	5ton	20	19.1	9	1800	69	1	1800	ø10	2PD	48.6	37.8	33.5	5.9	7.0	22.6	4.5	6.3	11.8	2.6	1.8	13.0	30.3	33.8	23.6	53.9	57.4	3.0	15.4	22.4	22.6	2.95	31.2	16.75	1596											
SUDHD-500DB	11000lbs	30																																		19.1/6.3	9/3	1800/600	69/23	1/0.33	1800/600	45.3	17.0	34.2	37.8	27.5
		40	45.3	19.9	37.2	40.8	30.5	67.7																																		71.3	22.65	1776		
SUEAH-750DB	7.5ton	20	15.9	11	1800	62.3	1.5	1800	ø12	2PD	63.0	51.2	45.3	6.3	7.7	23.6	5.5	6.3	15.2	3.4	2.4	14.1	35.0	35.1	27.8	62.8	62.9	3.2	20.3	30.9	29.2	3.15	40.6	22.65	2800	3024										
SUEAHD-750DB	16500lbs	30																																			15.9/5.3	11/3.7	1800/600	62.3/21	1.5/0.54	1800/600	45.3	18.0	38.9	39.0
		40	51.2	21.9	42.9	43.0	35.7	78.6																																			78.7	25.60	3050	3251
SUFAH-1000DB	10ton	20	16.1	15	1800	49	2	1800	ø14	2PD	63.0	51.2	45.3	6.3	7.7	23.6	5.5	6.3	18.8	3.4	2.4	14.1	35.0	37.5	27.8	62.8	65.3	3.2	19.9	31.3	28.8	3.15	41.0	22.65	3194	3415										
SUFAHD-1000DB	22000lbs	30																																			16.1/5.3	15/5	1800/600	49/16	2/0.67	1800/600	45.3	18.0	38.9	41.4
		40	51.2	21.9	42.9	45.4	35.7	78.6																																			81.1	25.60	3634	3965
SUIH-1500DB	15ton	20	14	17.4	1800	59	2	1800	ø18	2PD	70.1	55.3	45.3	7.9	8.9	28.0	7.9	6.9	34.7	2.9	2.4	17.8	39.0	41.3	31.7	70.7	73.0	3.9	20.6	34.7	31.3	3.94	44.5	22.65	4070	4180										
SUIHD-1500DB	33000lbs	30																																			14/4.6	17.4/5.8	1800/600	59/19.7	2/0.67	1800/600	53.2	21.8	43.0	45.3
		40	61	26.1	47.3	49.6	39.9	87.2																																			89.5	30.5	4290	4400
SUII-2000DB	20 ton	20	10.4	17.4	1800	59	3	1800	ø18	3PD	73.6	58.3	51.2	7.9	8.9	26.8	8.5	6.8	42.0	3.4	2.4	21.0	42.2	44.5	34.9	77.1	79.4	3.9	23.2	35.1	35.0	3.94	45.4	25.6	5560	5680										
SUIID-2000DB	44000 lbs	30																																			10.4/3.46	17.4/5.8	1800/600	59/19.7	3 / 1	1800/600	63.0	26.8	48.0	50.3
		40	74.8	32.7	53.9	56.2	46.5	100.4																																			102.7	37.4	6360	6480
SUIJ-2500DB	25 ton	20	7	15	1800	59	3	1800	ø18	4PD	78.1	60.0	66.9	11.8	13.2	30.3	9.1	9.0	43.4	3.5	2.7	29.4	53.3	55.7	43.1	96.4	98.8	5.9	21.2	38.8	33.7	6.1	51.3	33.5	6330	6450										
SUIJD-2500 DB	55000 lbs	30																																			7/2.3	15/5.8	1800/600	59/19.7	3 / 1	1800/600	86.6	37.9	61.8	64.1
		40	102.4	46.4	70.3	72.6	60.1	130.3																																			132.7	51.2	7670	7790
SUIJ-3000DB	30 ton	20	7	17.4	1800	59	2	1800	ø18	4PD	79.0	61.0	68.9	11.8	13.2	31.0	9.0	9.0	61.0	2.4	2.76	29.6	50.8	53.1	43.4	94.2	96.5	5.9	17.4	43.6	28.7	5.91	55.0	34.4	6330	6450										
SUIJD-3000DB	66000 lbs	30																																			7/2.3	17.4/5.8	1800/600	59/19.7	2/0.67x2	1800/600	86.6	38.4	59.6	59.6
		40	104.3	47.3	68.5	70.9	61.1	129.6																																			132.0	52.2	7400	7520



1 MECHANICAL LOAD BRAKE

The advanced design of the mechanical load brake provides braking without hook drift, independent of the motor brake.

2 WIRE ROPE

High Strength 19x7 IWSC (195kg/mm²)
Wire Rope has swaged fittings on both ends.

3 PUSH BUTTON STATION

(USA) IP-65 Push Button Station is standard and it's light weight and durable.

4 MOTOR BRAKE

Our AC Brake provides instant braking, with smooth, controlled starting and stopping.

5 MOTOR

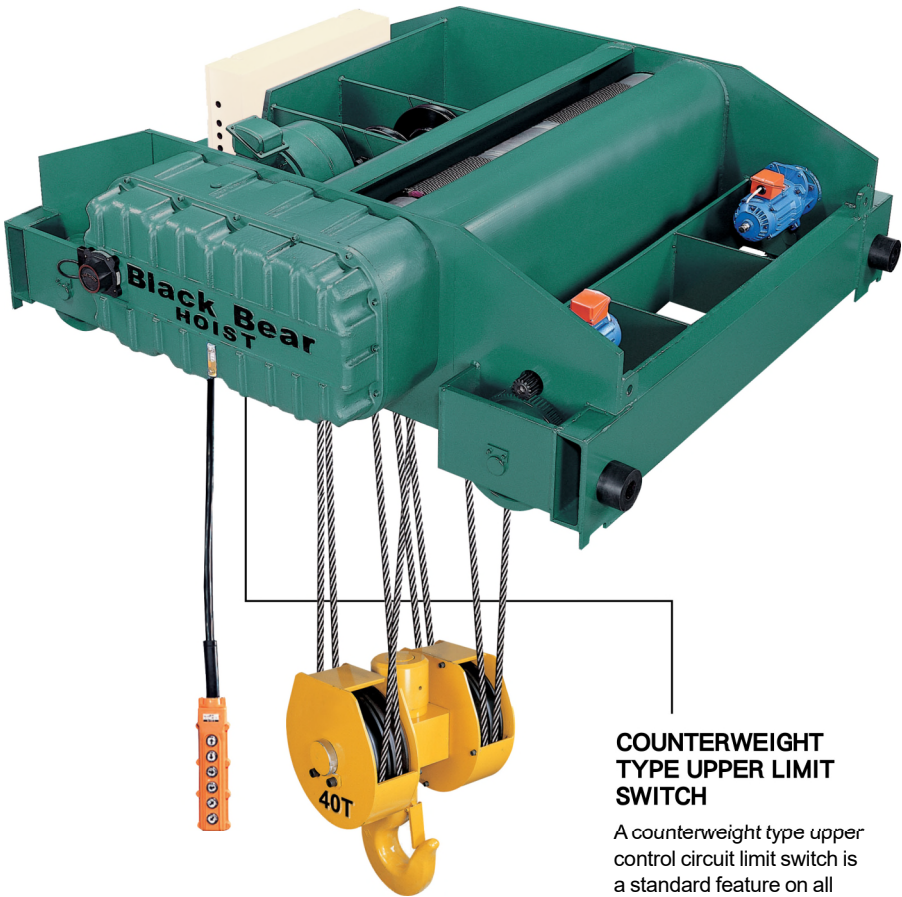
Hoist duty motors are made of heavy cast iron that provide maximum cooling during even the toughest operating conditions. The class F motor insulation (single speed) are rated for H4 service. Other insulation classes and thermal rating are available upon request.

6 LIFT

True vertical lift standard on low headroom hoists.

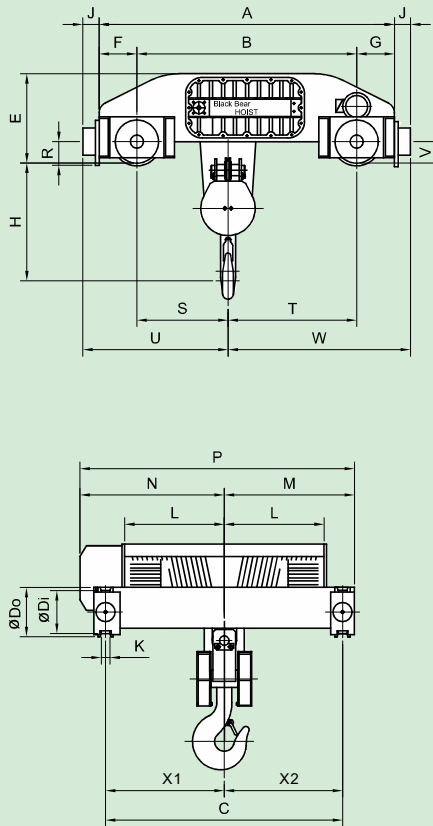
7 HOOK

Our high strength forged steel hook comes equipped with a safety latch and a thrust bearing which enables the hook to swivel 360 degrees.



COUNTERWEIGHT TYPE UPPER LIMIT SWITCH

A counterweight type upper control circuit limit switch is a standard feature on all top running trolley hoists.



SU SERIES SPECIFICATIONS & DIMENSIONS

Model	Capacity	Lift (ft)	Hoisting			Traversing			Wire Rope ømm	Reeving Type	Approximate Dimension(in)																												Appro. weight (lbs)	
			Speed (ft/min)	Motor HP	Motor RPM	Speed (ft/min)	Motor HPx2	Motor RPM			A	B	C	øDi	øDo	E	F	G	H	J	K	L	M	N	P	R	S	T	U	V	W	X1	X2	(S)	(D)					
																																				60HZ	60HZ	60HZ		
SUGI-2500	25 ton 55000 lbs	20	13.2	30	1800	59	2	1800	ø18	3PD	83.2	65.8	90.6	11.8	17.5	30.7	10.0	10.0	50.6	3.0	3.2	40.4	51.3	59.3	110.6	10.4	27.2	39.3	40.2	7.9	52.3	45.4	45.2	12360						
SUGID-2500		30											90.6									40.4	51.3	59.3	110.6							45.4	45.2	12360						
		40											102.4									46.3	57.2	65.2	122.4							51.3	51.1	13430						
SUGI-3000	30 ton 66000 lbs	20	13.2	40	1800	59	3	1800	ø20	3PD	86.5	66.5	90.6	15.8	17.5	31.7	10.0	10.0	50.6	3.0	3.2	40.4	51.3	59.3	110.6	10.4	27.2	39.3	40.2	7.9	52.3	48.3	42.3	12360						
SUGID-3000		30											90.6									40.4	51.3	59.3	110.6							48.3	42.3	12360						
		40											102.4									46.3	57.2	65.2	122.4							54.2	48.2	13430						
SUGJ-4000	40 ton 88000 lbs	30	9.9	40	1800	59	3	1800	ø20	4PD	86.5	66.5	90.6	15.8	17.5	31.7	10.0	10.0	59.0	3.0	3.2	40.4	51.3	59.3	110.6	10.4	22.1	44.4	35.1	7.9	57.4	48.3	42.3	12810						
SUGJD-4000		40											110.2									50.2	61.1	69.1	130.3							58.1	52.1	13880						
		50											126.0									58.1	69.0	77.0	146.0							66.0	60.0	14750						

※ Dimensions included control panet