



Professional cranes & hoists for lifting



Electric Chain Hoist / Low Headroom series



CHENG DAY MACHINERY WORKS CO., LTD.

No. 173, Wen Chiu Road, Dajia District, Taichung City, 437 Taiwan.
Tel: +886-4-2688-1581 Fax: +886-4-2688-1509
Website: www.chengday.com E-mail: info@chengday.com.tw

- Revision of August, 2024 (Edition No.5) #950188
- No further notice while sizes and dimensions update; Quotations are based on practical dimensions.
- Due to the printing factors, the color of the products is subject to minor deviation from the physical objects.

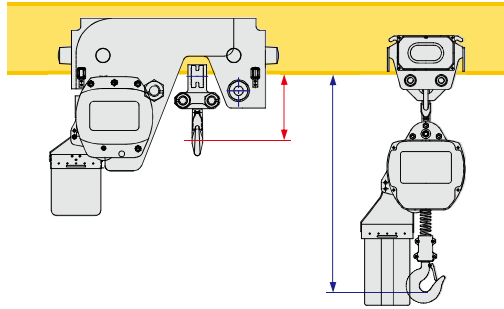


CHENG DAY MACHINERY WORKS CO., LTD.



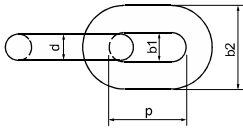
Features

- Specially engineered frame combines hoist and trolley for low headroom application.
- Low headroom hoist maximizes effective lift.
- Impressive additional operating height is available with low headroom hoist.
- Other options are available on request.



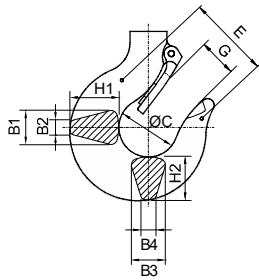
Low headroom configuration Standard configuration

LOAD CHAIN



Diameter d(mm)	Model Reference Being Used	Inner Length p(mm)	Inner Width b1(mm)	Outer Width b2(mm)	Breaking Load (kN)
Φ 7.1	YL(E · H)T-050~300 YL(H)TU-100~200	20.2	8.2	23.2	63
Φ 10.0	YST-200 · 300 YSTU-300	30.2	12.5	33.2	128
Φ 11.2	YST-250 · 500 YSTU-500	34.0	14.0	37.5	160

HOOK



Model	Capacity		Hook	Dimensions (mm)										Allow Stress (kg/mm ²)	Hook Block Weight (kg)
	(ton)	(kg)		H1	B1	B2	H2	B3	B4	C	G	E			
YL(H)T	0.5,1		B	33	23	9	29	23	9	40	28	60	70		*10
	2		B	45	31	10	41	31	10	46	36	75	70		*10
	3		B	55	34	19	48	34	19	52	40	90	70		*10
YL(E · H)TU	1		B	33	23	9	29	23	9	40	28	60	70		40
	2		B	45	31	10	41	31	10	46	36	75	70		40
	2,2.5		B	55	34	19	48	34	19	52	40	90	70		10
YST	3		B	55	34	19	48	34	19	52	40	90	70		20
	5		B	66	44	23	60	44	23	62	45	100	70		20
	3		B	55	34	19	48	34	19	52	40	90	70		50
YSTU	3		B	55	34	19	48	34	19	52	40	90	70		50
	5		B	66	44	23	60	44	23	62	45	100	70		90

● B=Bottom hook ● If the weight is less than 10 kg, it will be considered as 10 kg.

POWER SUPPLY :

- Electric Chain Hoists are available in all standard voltages of three Phase power, from 220V to 600V; as well as 115V or 230V of three Phase hoists are re-connectable.

LIFTING HEIGHT :

- Standard lifting height: 3 Meters / 6 Meters.
- Additional height available upon request (may be extra charged according to load chain length).

LIFTING SPEED :

- Please refer to each detailed specification.

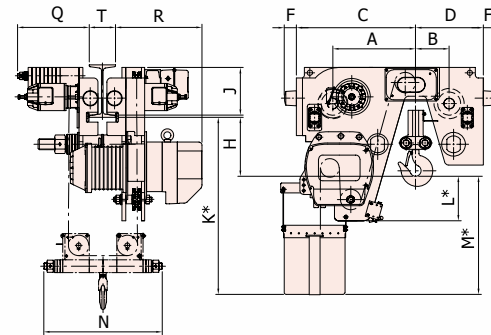
PUSH BUTTON PENDENT :

- 4-button type: up and down; left and right (trolley).
- 6-button type: up and down; left and right; forward and reverse (end carrier).



YLTU/YHTU /YSTU series

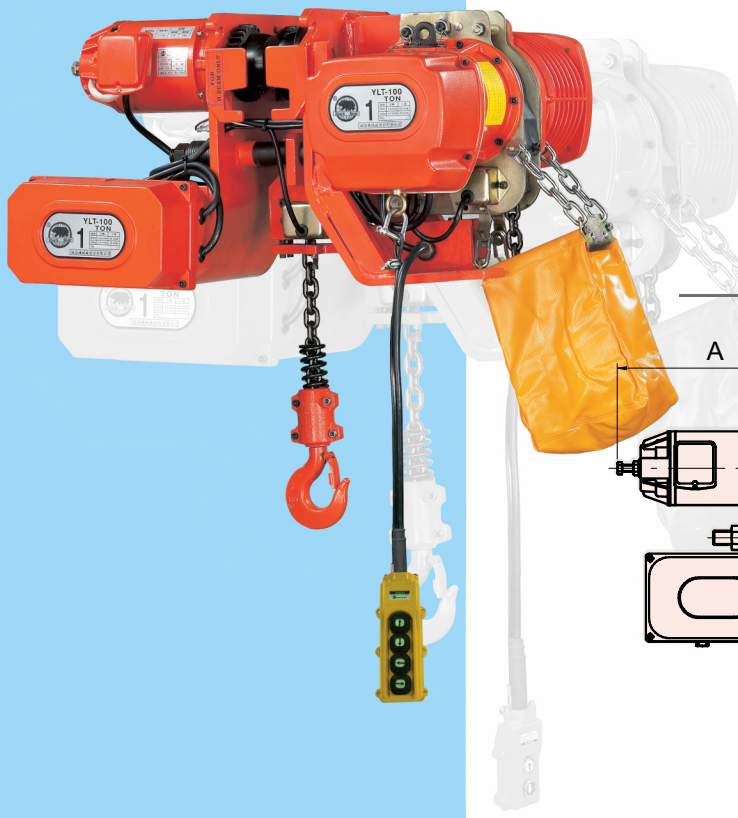
1ton~5ton



Specification/Dimensions

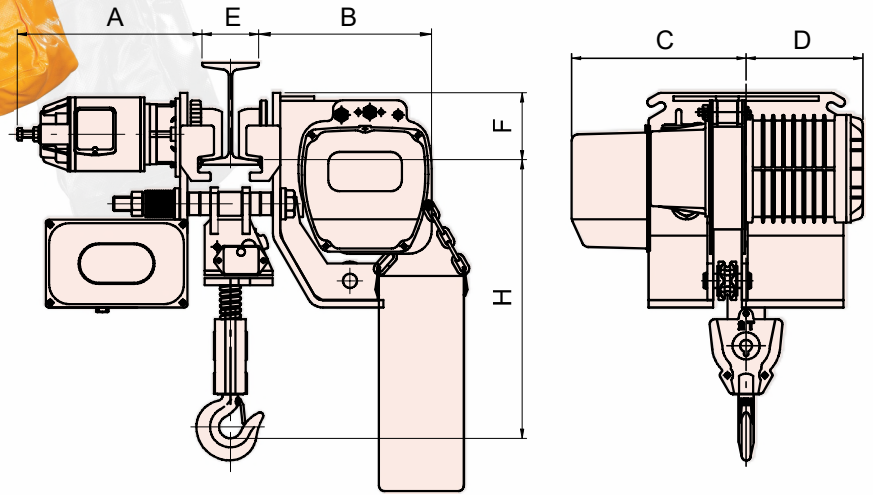
Model	Capacity (ton)	Fall no.	Dimension (mm)														Hoisting		Traversing		Flange Width (mm) T	N.W. (kg)		
			H	A	B	C	D	F	J	K*	L*	M*	N	Q	R	Speed(m/min) 50Hz	Motor kw pole	Speed(m/min) 60Hz	Motor kw pole					
			240	302	128	431	256	21	167	738	217	483	435	343	349									
YLTU-100	1	2	240	302	128	431	256	21	147	746	240	506	435	343	349	3.3	4.0	1.5, 4P	20	24	0.25x2, 4P	100-125	240	
YLTUD-100																3.3/1.1	4.0/1.3	1.8/0.6, 4/12P	20/6.7	24/8	0.25/0.08x2, 4/12P			
YHTU-100	1	2	240	302	128	431	256	21	147	746	240	506	435	343	349	4.6	5.5	1.8, 4P	20	24	0.25x2, 4P	100-125	240	
YHTUD-100																4.6/1.5	5.5/1.8	1.8/0.6, 4/12P	20/6.7	24/8	0.25/0.08x2, 4/12P			
YLTU-200	2	2	255	302	128	431	256	21	167	738	217	483	435	343	349	2.3	2.8	1.8, 4P	20	24	0.25x2, 4P	125-150	272	
YLTUD-200																2.3/0.77	2.8/0.93	1.8/0.6, 4/12P	20/6.7	24/8	0.25/0.08x2, 4/12P			
YHTU-200	2	2	255	302	128	431	256	21	167	738	217	483	435	343	349	3.3	4.0	1.8, 4P	20	24	0.25x2, 4P	125-150	272	
YHTUD-200																3.3/1.1	4.0/1.3	1.8/0.6, 4/12P	20/6.7	24/8	0.25/0.08x2, 4/12P			
YSTU-300	3	2	280	395	160	569	324	57	227	925	240	645	565	352	416	4.3	5.2	3.7, 4P	20	24	0.4x2, 4P	125-175	593	
YSTUD-300																4.3/1.4	5.2/1.7	3.7/1.2, 4/12P	20/6.7	24/8	0.4/0.13x2, 4/12P			
YSTU-500	5	2	330	395	160	569	324	57	227	864	123	534	580	366	430	2.7	3.2	3.7, 4P	20	24	0.4x2, 4P	125-175	627	
YSTUD-500																2.7	0.9	3.2/1.1	3.7/1.2, 4/12P	20/6.7	24/8	0.4/0.13x2, 4/12P		

※Duty Rating(ED%) : Single 40% ;Dual 40%/20% ※ "*" : Standard lifting height 3M



YET/YLT/ YHT/YST series

0.5ton~5ton



Specification/Dimensions

Model	Capacity (ton) (ton)	Fall no.	Dimension (mm)							Hoisting			Traversing			N.W. (kg)
			H	A	B	C	D	E	F	Speed(m/min)		Motor kw pole	Speed(m/min)		Motor kw pole	
										50Hz	60Hz		50Hz	60Hz		
YET-050	0.5	1	440	327	307	278	241	75-125	112	6.7	8.0	1.5, 4P	20	24	0.25, 4P	188
YETD-050							286			6.7/2.2	8.0/2.7	1.8/0.6, 4/12P	20/6.7	24/8	0.25/0.08, 4/12P	
YET-100	1	1	440	327	307	278	241	75-125	112	4.7	5.6	1.5, 4P	20	24	0.25, 4P	188
YETD-100							286			4.7/1.6	5.6/1.9	1.8/0.6, 4/12P	20/6.7	24/8	0.25/0.08, 4/12P	
YET-200	2	2	520	330	310	311	208	100-150	118	2.3	2.8	1.8, 4P	20	24	0.25, 4P	216
YETD-200							253			2.3/0.77	2.8/0.93	1.8/0.6, 4/12P	20/6.7	24/8	0.25/0.08, 4/12P	
YLT-050	0.5	1	440	327	307	278	241	75-125	112	6.7	8.0	1.5, 4P	20	24	0.25, 4P	188
YLTD-050							286			6.7/2.2	8.0/2.7	1.8/0.6, 4/12P	20/6.7	24/8	0.25/0.08, 4/12P	
YLT-100	1	1	440	327	307	278	241	75-125	112	4.7	5.6	1.5, 4P	20	24	0.25, 4P	188
YLTD-100							286			4.7/1.6	5.6/1.9	1.8/0.6, 4/12P	20/6.7	24/8	0.25/0.08, 4/12P	
YLT-200	2	2	520	330	310	311	208	100-150	118	2.3	2.8	1.8, 4P	20	24	0.25, 4P	216
YLTD-200							253			2.3/0.77	2.8/0.93	1.8/0.6, 4/12P	20/6.7	24/8	0.25/0.08, 4/12P	
YLT-300	3	3	593	366	315	343	208	125-175	143	1.5	1.8	1.8, 4P	20	24	0.6, 4P	277
YLTD-300							221			1.5/0.5	1.8/0.6	1.8/0.6, 4/12P	20/6.7	24/8	0.6/0.2, 4/12P	
YHT-050	0.5	1	440	327	307	278	241	75-125	112	9.2	11	1.8, 4P	20	24	0.25, 4P	188
YHTD-050							286			9.2/3.1	11/3.7	1.8/0.6, 4/12P	20/6.7	24/8	0.25/0.08, 4/12P	
YHT-100	1	1	440	327	307	278	241	75-125	112	6.7	8.0	1.8, 4P	20	24	0.25, 4P	188
YHTD-100							286			6.7/2.2	8.0/2.7	1.8/0.6, 4/12P	20/6.7	24/8	0.25/0.08, 4/12P	
YHT-200	2	2	520	330	310	311	208	100-150	118	3.3	4.0	1.8, 4P	20	24	0.25, 4P	216
YHTD-200							253			3.3/1.1	4.0/1.3	1.8/0.6, 4/12P	20/6.7	24/8	0.25/0.08, 4/12P	
YHT-300	3	3	593	366	315	343	208	125-175	143	2.2	2.6	1.8, 4P	20	24	0.6, 4P	277
YHTD-300							221			2.2/0.73	2.6/0.87	1.8/0.6, 4/12P	20/6.7	24/8	0.6/0.2, 4/12P	
YST-200	2	1	702	371	443	324	319	125-175	143	6.6	7.9	3.7, 4P	20	24	0.6, 4P	438
YSTD-200							376			6.6/2.2	7.9/2.6	3.7/1.2, 4/12P	20/6.7	24/8	0.6/0.2, 4/12P	
YST-250	2.5	1	724	371	443	324	319	125-175	143	5.3	6.4	3.7, 4P	20	24	0.6, 4P	448
YSTD-250							376			5.3/1.8	6.4/2.1	3.7/1.2, 4/12P	20/6.7	24/8	0.6/0.2, 4/12P	
YST-300	3	2	765	371	443	274	363	125-175	143	4.3	5.2	3.7, 4P	20	24	0.6, 4P	465
YSTD-300							420			4.3/1.4	5.2/1.7	3.7/1.2, 4/12P	20/6.7	24/8	0.6/0.2, 4/12P	
YST-500	5	2	805	371	443	265	372	125-175	148	2.7	3.2	3.7, 4P	20	24	0.6, 4P	505
YSTD-500							429			2.7/0.9	3.2/1.1	3.7/1.2, 4/12P	20/6.7	24/8	0.6/0.2, 4/12P	

※Maximun lifting height : 6M

Federation Europeenne De La Manutention

Cubic mean value Definitions		Average operating time per day in hours							
1 (light)	$(k \leq 0.50)$ Mechanisms or parts thereof, usually subject to very small loads and in exceptional cases only to maximum loads.	0.25-0.5	0.5-1	1-2	2-4	4-8	8-16	> 16	
2 (medium)	$(0.50 < k \leq 0.63)$ Mechanisms or parts thereof, usually subject to small loads but rather often to maximum loads.	0.12-0.25	0.25-0.5	0.5-1	1-2	2-4	4-8	8-16	> 16
3 (heavy)	$(0.63 < k \leq 0.80)$ Mechanisms or parts thereof, usually subject to medium loads but frequently to maximum loads.	≤ 0.12	0.12-0.25	0.25-0.5	0.5-1	1-2	2-4	4-8	8-16
4 (very heavy)	$(0.80 < k \leq 1)$ Mechanisms or parts thereof, usually subject to maximum or almost to maximum loads.		≤ 0.12	0.12-0.25	0.25-0.5	0.5-1	1-2	2-4	4-8
Classification of Mechanisms FEM 9,511		1 Dm	1 Cm	1 Bm	1 Am	2 m	3 m	4 m	5 m

ISO/FEM (9.511)

Classification of mechanisms into groups

1 Dm	1 Cm	1 Bm	1 Am	2 m	3 m	4 m	5 m
M 1	M 2	M 3	M 4	M 5	M 6	M 7	M 8

Class of operation time

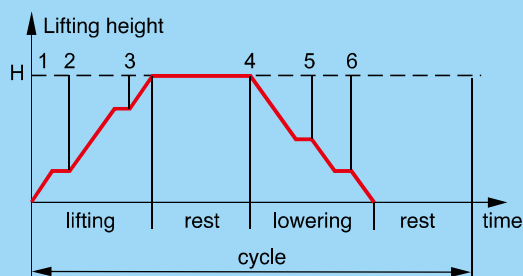
Class of operation time	Average operating time per day (in hours)	Calculated total operating time in hours	
V0.06	T0	≤ 0.12	200
V0.12	T1	≤ 0.25	400
V0.25	T2	≤ 0.5	800
V0.5	T3	≤ 1	1600
V1	T4	≤ 2	3200
V2	T5	≤ 4	6300
V3	T6	≤ 8	12500
V4	T7	≤ 16	25000
V5	T8	≤ 16	50000

Classification of mechanisms

Load spectrum	Cubic mean value	Class of operation time									
		V0.06	V0.12	V0.25	V0.5	V1	V2	V3	V4	V5	
		T0	T1	T2	T3	T4	T5	T6	T7	T8	
		Average operating time per day in hours									
		≤ 0.12	≤ 0.25	≤ 0.5	≤ 1	≤ 2	≤ 4	≤ 8	≤ 16	>16	
1 L1	$k \leq 0.50$			1 Dm	1 Cm	1 Bm	1 Am	2 m	3 m	4 m	
2 L2	$0.50 < k \leq 0.63$		1 Dm	1 Cm	1 Bm	1 Am	2 m	3 m	4 m	5 m	
3 L3	$0.63 < k \leq 0.80$	1 Dm	1 Cm	1 Bm	1 Am	2 m	3 m	4 m	5 m		
4 L4	$0.80 < k \leq 1.00$	1 Cm	1 Bm	1 Am	2 m	3 m	4 m	5 m			

Operation Cycle

Hoist with one speed



Hoist with two speed

